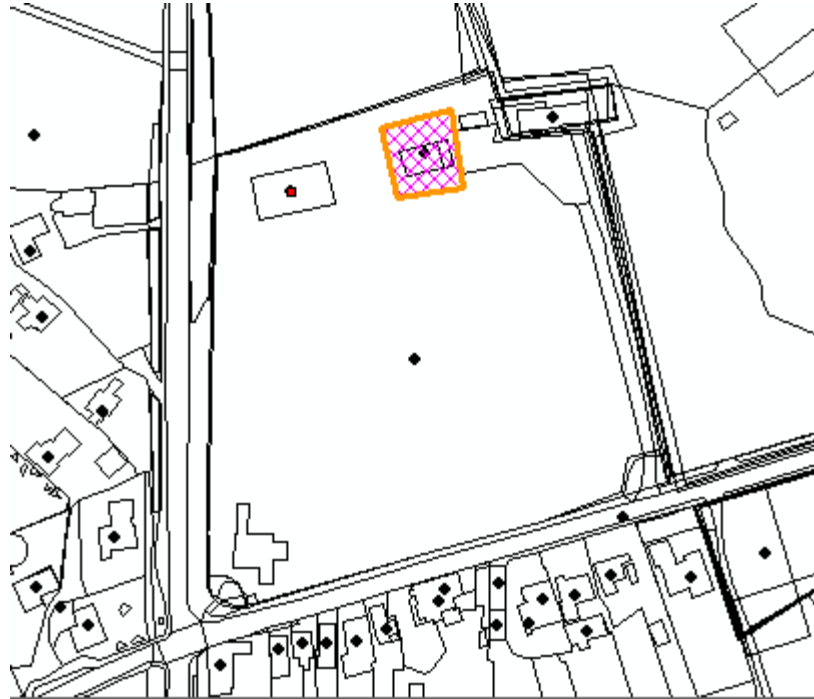
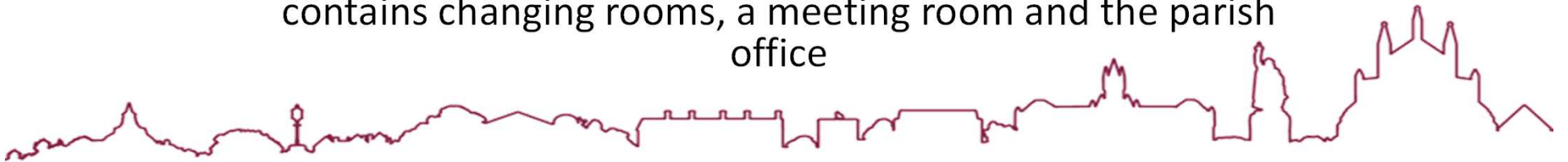


20/01089/FUL Recreation Ground, Sports Pavillion
Upper Church Road
Shedfield



To alter and extend an existing sports pavilion which contains changing rooms, a meeting room and the parish office



Proposal

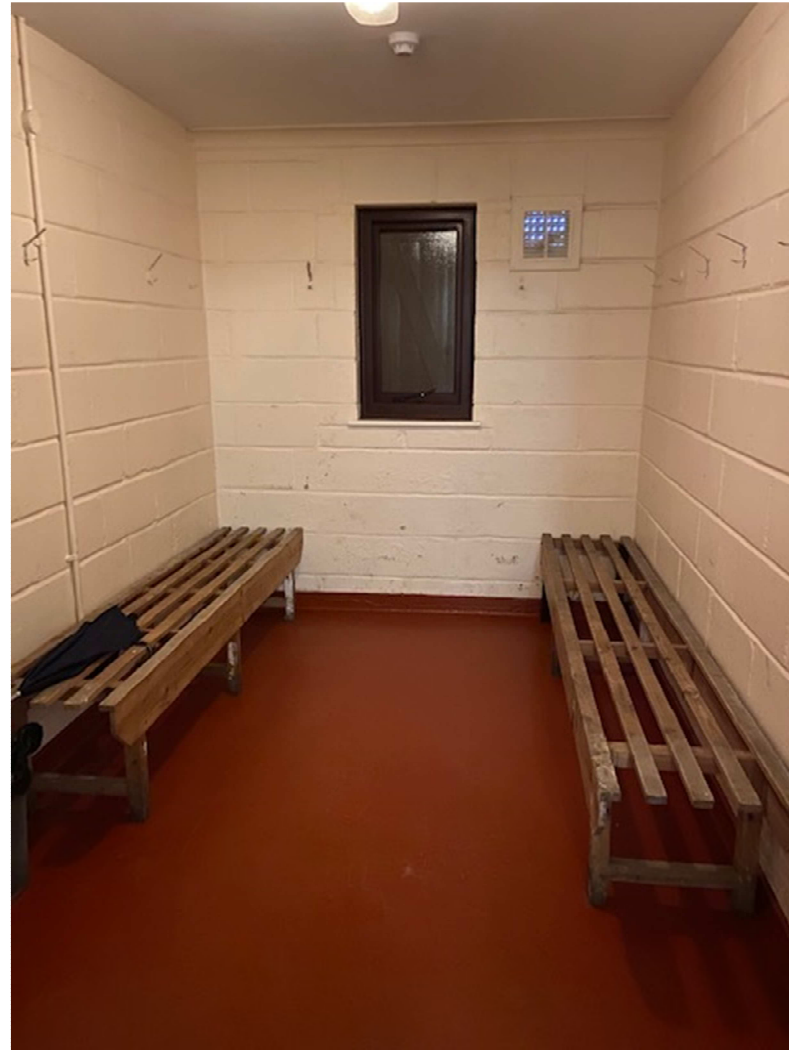
To alter and extend an existing sports pavilion which contains changing rooms, a meeting room and the parish office, to provide the following accommodation:

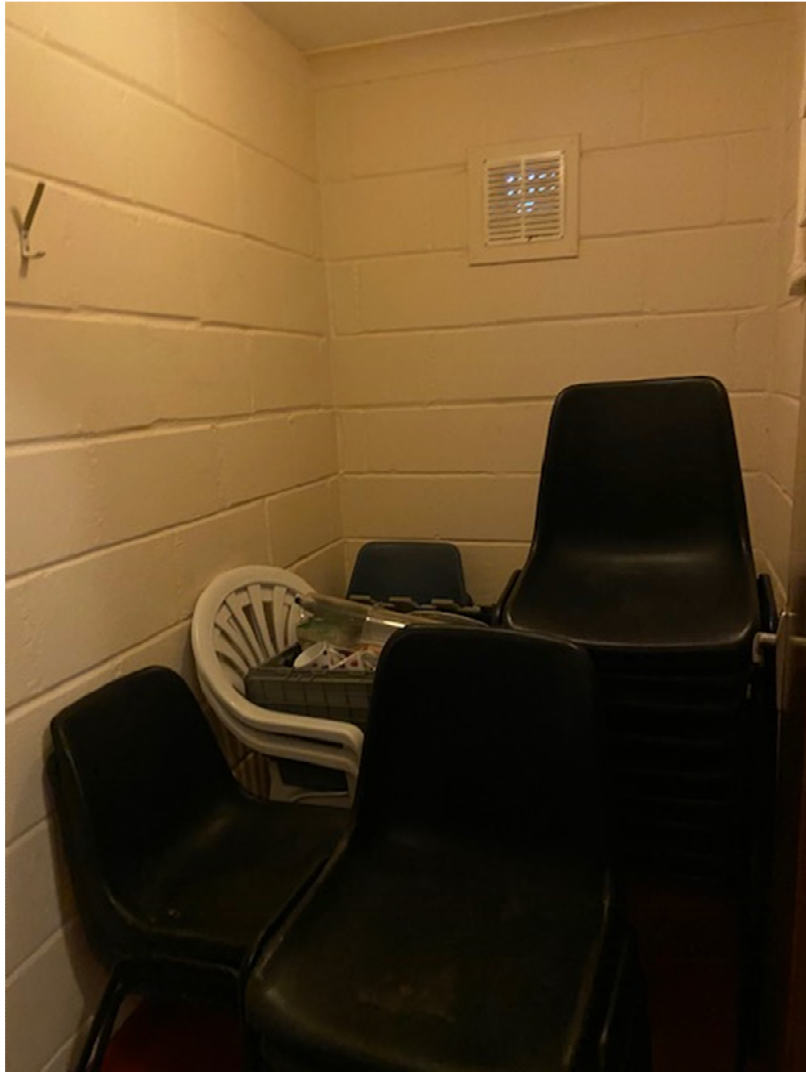
- 1). two larger separate unisex changing rooms with showering facilities (to Sports England and Football Foundation specification);
- 2). two separate changing rooms with integral shower facilities for match officials;
- 3). an access wc and separate male and female toilets;
- 4). a large function room with a separate table/chair store;
- 5). a large kitchen to serve onto the function room;
- 6). a refurbished and extended parish office with store room;
- 7). a new draft lobby entrance to the Parish Office;
- 8). a separate external entrance to the function room plus a large sliding folding glazed door with direct access to external terrace;
- 9). a separate entrance from the field to the changing facilities;
- 10). internal link doors between the changing facilities, the function room and the Parish Office to allow a combination of uses.

Shedfield Pavilion views from the recreational field

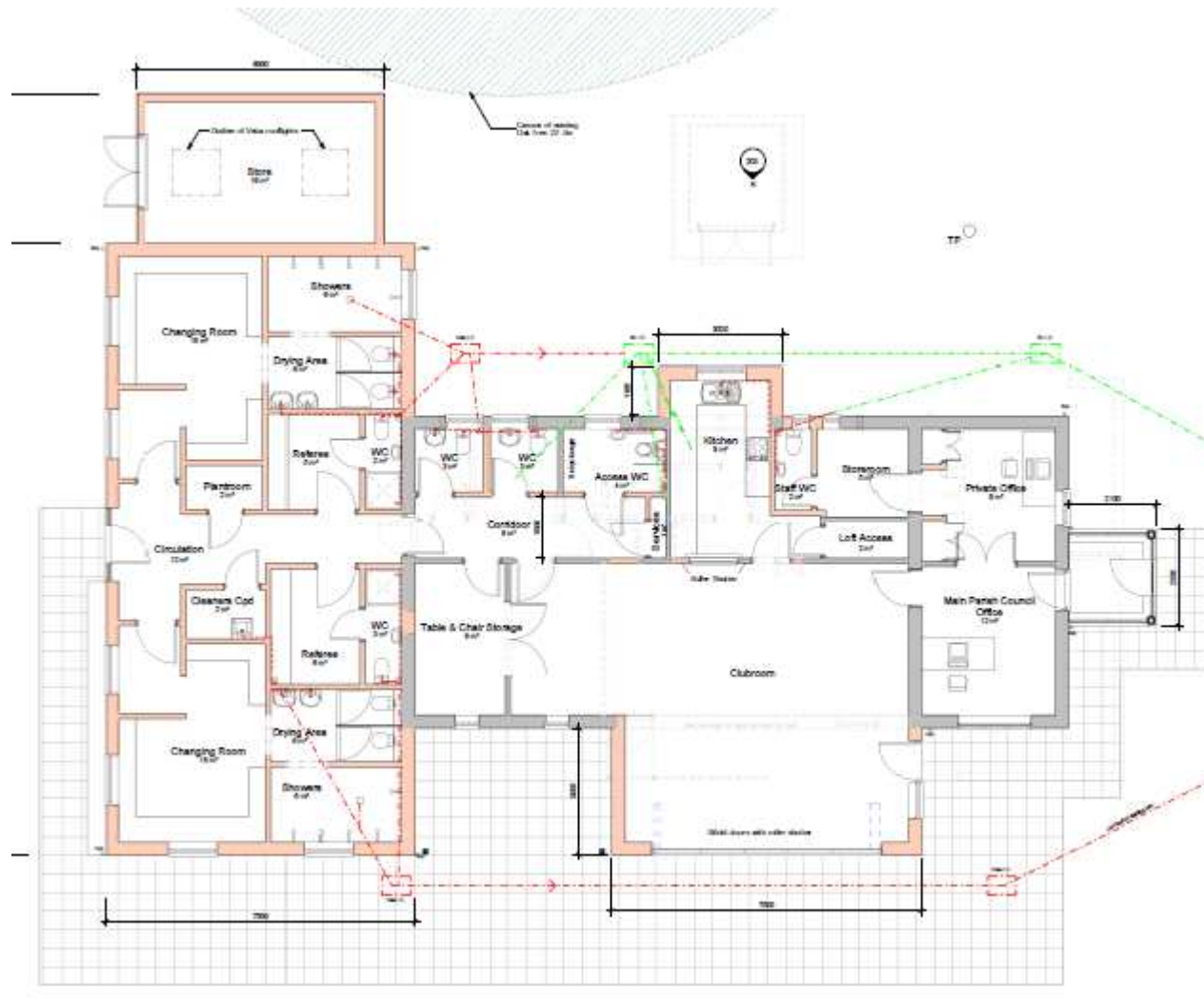


Existing facilities at the Pavilion

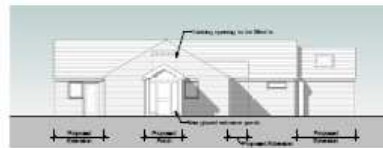




Proposed Floor Plans



Proposed Elevations



Proposed East Elevation
1:100



Proposed North Elevation
1:100



Proposed West Elevation
1:100



Proposed South Elevation
1:100



3D View 1



3D View 3



3D View 2

Sheffield Council

Axis

BLM Enabled Practice

The project was delivered using BLM Enabled Practice

Alterations and Extension
Sports Pavilion and Parish Office
Sheffield Parish Council

Elevations and 3Ds as Proposed

19-036 - 203

View of the Pavilion from the existing car parking area



Recommendation

Development acceptable as complies with Local plan policies.

Application permitted subject to recommended conditions.